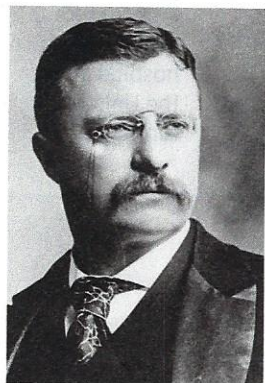


# Be All You Can Be

Test your knowledge about the Army, which celebrates its **246th anniversary** on June 14.

**1** The U.S. Army is so old it predates many modern countries. Which of the following sovereign states are NOT as old as the Army:

- A) Canada
- B) Mexico
- C) U.S.
- D) All of the above



**2** More U.S. presidents have served in the Army than in any other branch of the military. True or False?

**3** With over a million active-duty and civilian personnel combined, the Army is one of the largest employers in the U.S., second only to Walmart.

True or False?



**4** Traditionally known as The Old Guard, the 3rd U.S. Infantry Regiment — the oldest active-duty infantry regiment in the Army — has been serving since which year?

- A) 1782
- B) 1783
- C) 1784
- D) 1785
- E) 1786

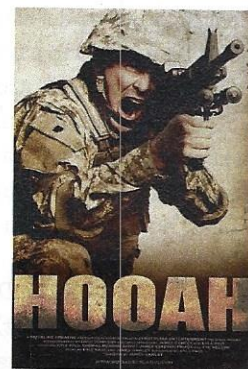


**5** Soldiers have had a lot of nicknames over the centuries. One of the most enduring (since World War II, at least) has been "G.I.," which — depending on whom you ask — stands for:

- A) Galvanized Iron
- B) Grizzled Infantry
- C) General Issue
- D) Government Issue
- E) Guards of Independence

**6** What are common translations/meanings for the Army battle cry "hooah"?

- A) "Yes, sir"
- B) "I concur"
- C) "Cool, dude"
- D) "Thank you"
- E) "We rock"
- F) All of the above





**7** In 1983, more than 100 million people watched the finale of *M\*A\*S\*H* (a dramedy set in the Korean War), making it the most-viewed scripted television show of all time. What does the acronym M.A.S.H. stand for?

- A) Military Ammunition Supply Handlers
- B) Mobilized Army Surveillance Housing
- C) Mobile Army Surgical Hospital
- D) Motorized Army Support Headquarters



**8** At the battle of Chickamauga, what was Maj. Gen. George Thomas's famous quote?

- A) "Hail the Lightning Brigade!"
- B) "This shall be a slow trot."
- C) "This Army does not retreat."
- D) "We shall stand like rocks."



**9** If someone invites you to see a "Twilight Tattoo" at Joint Base Myer-Henderson Hall in Arlington, Va., it's not inked skin at dusk on display. This type of tattoo is:

- A) A laser show set to the music of Pink Floyd
- B) A performance of historical military music by a unit in Continental Army-era uniforms
- C) The ritualistic graffiti tagging of a decommissioned Humvee



**10** The Army's Corps of Discovery unit formed the heart of what famous 1800s campaign to map North American territory?

- A) The Westward Wayfinders
- B) Thomas Jefferson's Excursion
- C) The Jeffersonian Brigade
- D) The Lewis and Clark Expedition

**11** All of the following commercial products came about as a direct result of soldier needs EXCEPT for this one:

- A) Ray-Ban sunglasses
- B) Duct Tape
- C) The Jeep
- D) Chicken nuggets



**12** Why are the pants of a dress blues uniform a different color from the jacket?

- A) There's a shortage of material: The pants must be made with different fabric, and the colors do not match.
- B) It's a nod to the future: Eventually, the Army plans to transition to updated color.
- C) It's a tribute to the past: Traditionally, cavalry troops would take off and stow their jackets while riding, so the pants faded faster.

#### TRANSLATE YOUR SCORE

**0-4: Hurry Up And Wait.** You may not be ready to be all you can be.

**5-8: The Answers Go Rolling Along.** You're getting closer to Army strong.

**9-12: A Five-Star Effort.** You have honed the ability to deploy, fight, and win.

— By Tony Ware, a military and pop culture reporter

ANSWERS: 1. D 2. True 3. True 4. C 5. A, C, D 6. F 7. C 8. C 9. B 10. D 11. D 12. C